



2024 NISSAN LEAF SV PLUS - EPA Range up to 212 miles+++



Scan QR code for general
model information & options

100% ELECTRIC

Standard Equipment Included at No Extra Charge

MECHANICAL & PERFORMANCE

214HP (160kW) AC Synchronous Motor
60 kWh Lithium-Ion Battery
6.6 kW Onboard Charger
Quick Charge Port
Portable Charge Cable (120V/240V EVSE)
Regenerative Braking System
e-Pedal Mode & Hill Start Assist

SAFETY & SECURITY

Nissan Safety Shield 360
High Beam Assist
Automatic Emergency Braking
with Pedestrian Detection
Lane Departure Warning
Blind Spot Warning
Rear Automatic Braking
Rear Cross Traffic Alert

COMFORT & CONVENIENCE

ProPILOT Assist w/ Steering Assist &
Intelligent Cruise Control w/ Full Speed
Range & Hold
Intelligent Around View Monitor
Rear Door Alert
Nissan Intelligent Key® System w/
Charge Port Door Release
Front Heated Seats

AUDIO & INFOTAINMENT

NissanConnect® EV w/ Navigation & Services
Apple Carplay®++
Android Auto™ ++
Nissan Door to Door Navigation w/ 3D
Graphics & Satellite Imagery
SiriusXM® Radio w/ Advanced
Audio Features++
SiriusXM® Radio w/ Advanced
SiriusXM® Traffic & Travel Link++
Sirius Eyes Free++
Bluetooth® Hands-Free Phone System++
Hands-Free Text Messaging Assistant
Streaming Audio Via Bluetooth®++

NissanConnect® EV

with Trial Access included++

EXTERIOR

17" Alloy Wheels
Dual Power & Heated Outside Mirrors
LED Headlights & Signature Daytime
Running Lights
Charge Port Light & Lock

++For More Information,
See Dealer, Owner's Manual or
www.NissanUSA.com/connect/legal

+++Actual Range Will Vary With Trim
Levels, Options, & Driving Conditions
See Customer Disclosure Form For Details

Manufacturer's Suggested
Retail Base Price: \$36,190.00

Options Included by Manufacturer

| | |
|--|--------|
| Splash Guards | 245.00 |
| Carpets Floor Mats & Cargo Area Mat | 285.00 |
| Rear Cupholders & Stash Tray | 120.00 |
| Kick Plates | 160.00 |
| Safety Kit | 100.00 |
| First Aid Kit | |
| Emergency Kit | |

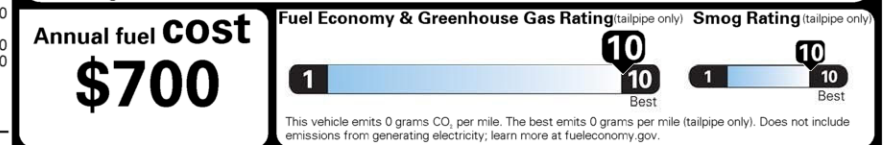
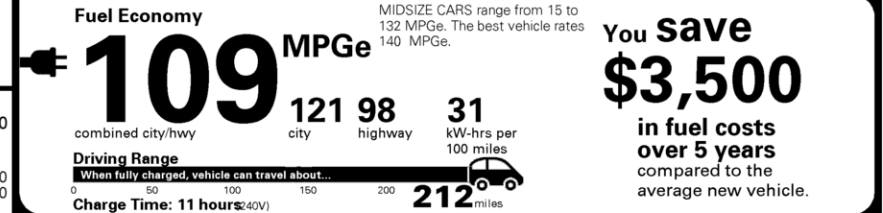
DESTINATION CHARGES 1,115.00

Total* \$38,215.00

*Does not include dealer installed options and accessories, local taxes or license fees. This label has been applied pursuant to federal law. Do not remove prior to delivery to the ultimate purchaser.

**Not actual Monroney Label. Provided for informational purposes only. Vehicle features, pricing and other information subject to change, may vary from actual vehicle content and/or Monroney label description. While Nissan makes reasonable efforts to ensure accuracy of information, Nissan is not responsible for changes, errors or omissions. See actual vehicle and/or verify information in question with your Nissan dealer.

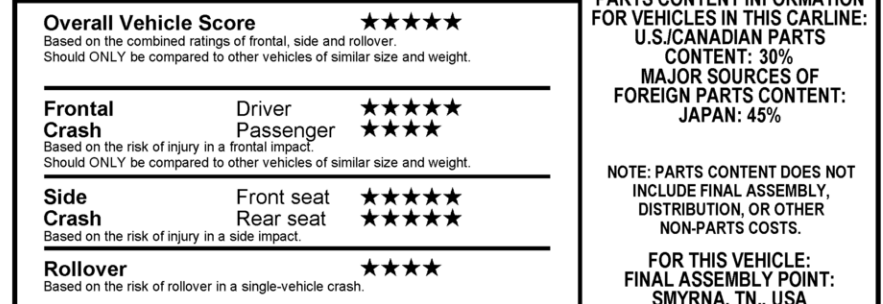
EPA DOT Fuel Economy and Environment



Actual results will vary for many reasons, including driving conditions and how you drive and maintain your vehicle. The average new vehicle gets 28 MPG and costs \$9,750 to fuel over 5 years. Cost estimates are based on 15,000 miles per year at \$0.15 per kW-hr. MPGe is miles per gasoline gallon equivalent. Vehicle emissions are a significant cause of climate change and smog.

fuelconomy.gov
Calculate personalized estimates and compare vehicles

GOVERNMENT 5-STAR SAFETY RATINGS



Star ratings range from 1 to 5 stars (★★★★★) with 5 being the highest.
Source: National Highway Traffic Safety Administration (NHTSA)
www.safercar.gov or 1-888-327-4236

This Vehicle qualifies for Nissan's
Security+Plus Extended Protection Plan
The only service agreement backed by
Nissan Extended Services North America!
Ask your dealer for details, or call 1-800-NISSAN-1
for more information

Dealer:
BOULDER NISSAN
2285 28TH ST
BOULDER, CO 80301

VIN: 1N4CZ1CV5RC553146
MDL: 17114-553146 K23-G
OPT: B-B93L92M53N92S92C03

EXT: BRILLIANT SILVE
INT: BLACK
EMS: 50 STATE EMISSIONS

Transport Method: TRUCK 20231020001219AS3748